

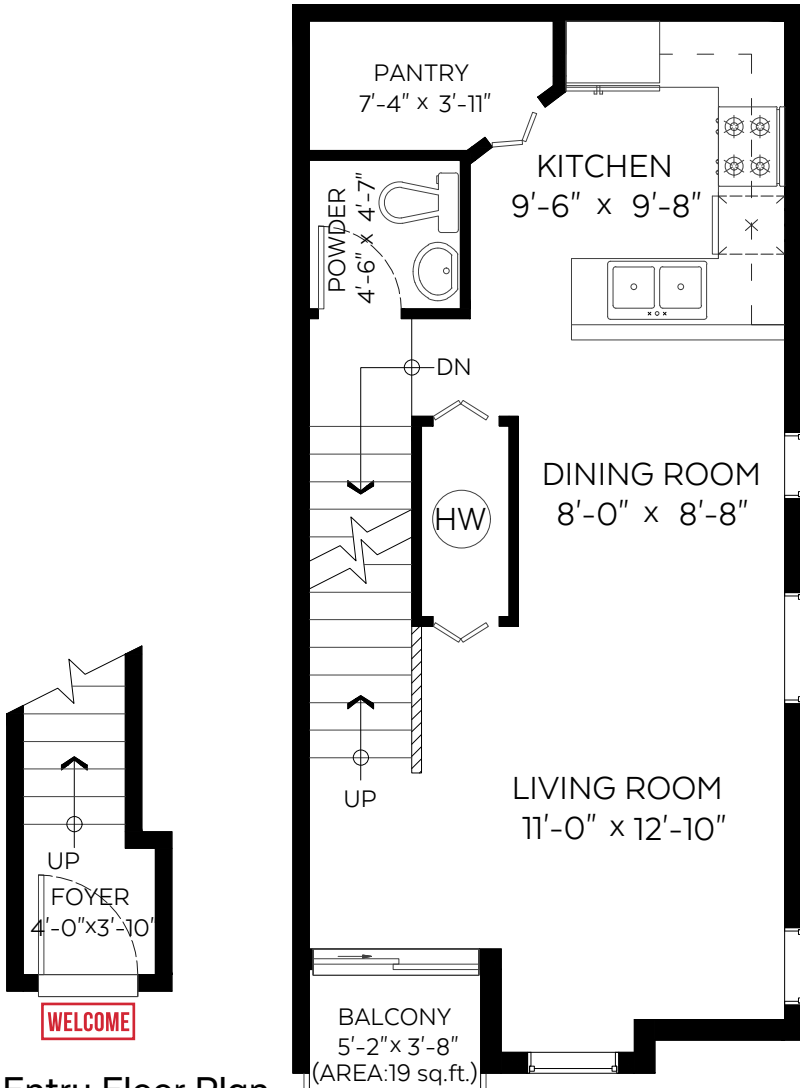


Main Floor:	477 sq.ft.
Upper Floor:	473 sq.ft.
Entry Floor:	62 sq.ft.
Total:	1,012 sq.ft.

Auxiliary Area

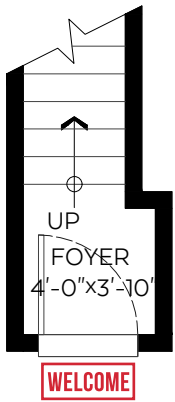
Balconies:	40 sq.ft.
------------	-----------

SCALE
0' 5'



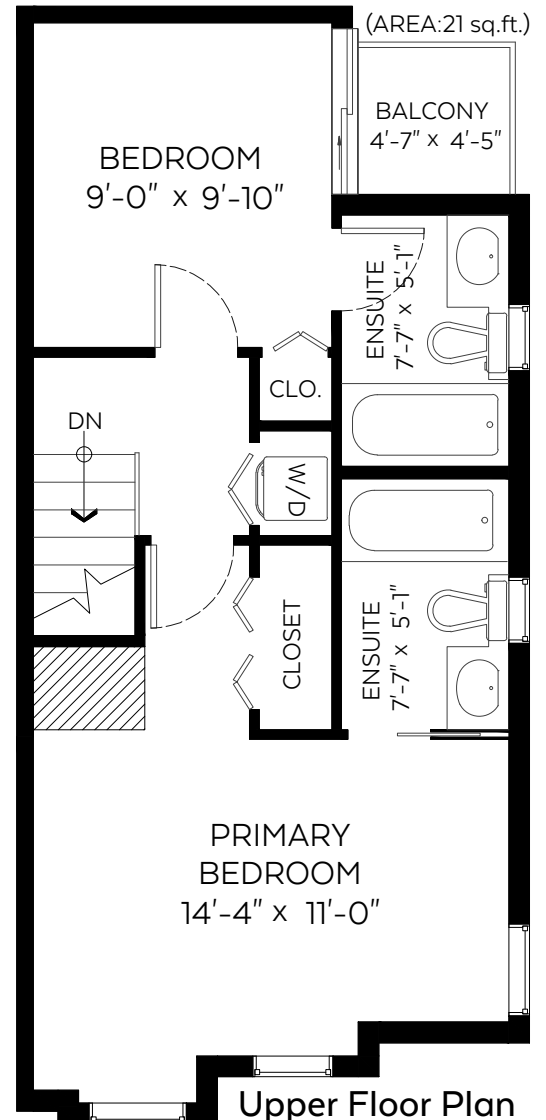
Entry Floor Plan

Floor Area: 62 sq.ft
Ceiling Height: 8 ft.



Main Floor Plan

Floor Area: 477 sq.ft
Ceiling Height: 8 ft.



Upper Floor Plan

Floor Area: 473 sq.ft.
Ceiling Height: 8 ft.

